

Spherical washers

Steel / Stainless Steel, combined

SPECIFICATION

Version in Steel

Steel **ST**

Case hardening steel
case hardened
all round depth 0.2 to 0.4 mm
hardness (550 + 100) HV 10

Version in Stainless Steel

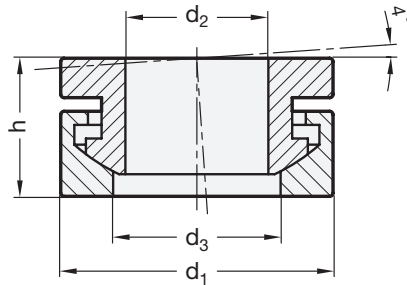
Stainless Steel AISI 303 **NI**

INFORMATION

Spherical washers combinations GN 6319.1 provide an "und detachable" connection for male and female spherical washers DIN 6319 (see page 962).
They simply storage and allow fast and efficient installation.

TECHNICAL INFORMATION

- Stainless Steel characteristics (see page A26)



GN 6319.1

Description	d1	d2	d3	h	For screw	Static load F in kN	⚖
GN 6319.1-13-ST	13	6.4	7.4	7	M 6	9	4
GN 6319.1-17-ST	17	8.4	9.7	8.5	M 8	17	9
GN 6319.1-21-ST	21	10.5	12	10.5	M 10	26	17
GN 6319.1-25-ST	25	13	14.8	13	M 12	38	28
GN 6319.1-32-ST	32	17	19.7	17	M 16	73	62
GN 6319.1-40-ST	40	21	24.6	20.3	M 20	117	114

GN 6319.1-NI

STAINLESS STEEL

Description	d1	d2	d3	h	For screw	Static load F in kN	⚖
GN 6319.1-13-NI	13	6.4	7.4	7	M 6	6	4
GN 6319.1-17-NI	17	8.4	9.7	8.5	M 8	12	9
GN 6319.1-21-NI	21	10.5	12	10.5	M 10	16	18
GN 6319.1-25-NI	25	13	14.8	13	M 12	24	20
GN 6319.1-32-NI	32	17	19.7	17	M 16	45	60
GN 6319.1-40-NI	40	21	24.6	20.3	M 20	71	110

